

CREATIVECHEF®

◆ From Spain ◆

Vacuum Packaging Machine Use and Maintenance Manual

VP160/VP180



Preface

Dear user, please read this manual carefully before using it, which is very important for you to use the equipment properly and the security of the operator. The dangers which may cause in the process of operation and maintenance of the equipment will be described through symbols in this manual. And the following symbols are used in the text for your reference.

**Safety warning**

Dear user, please read this manual carefully before using it, which is very important for you to use the equipment properly and the security of the operator. The dangers which may cause in the process of operation and maintenance of the equipment will be described through symbols in this manual. And the following symbols are used in the text for your reference.

**Notes**

This symbol represents the basic information of the equipment and methods or techniques used by the user.

We reviewed the contents of this manual. And we can't guarantee that the contents is exactly the same as the actual situation due to the error. But we will review the information periodically and make necessary corrections and update accordingly. If you have any concern about the performance or operation of the equipment after referring to this manual, please contact us or the distributor before using it.



We are not responsible for any equipment malfunction or accident caused by installation and use of failure to follow the contents of this manual. All the copyrights of this manual are owned by the company and are strictly prohibited from spreading, copying and other infringing actions. In case of any infringement, the company will retain the right to sue.



Precautions should be taken to prevent the equipment from damage when removing packaging. Please check whether the delivered equipment is consistent with the contact or requirements, if the delivery is incomplete or damaged, please notify the distributor.

**Contents**

1. Safety	1
1.1 Installation	1
1.2 Risks	1
1.3 Equipment	1
1.4 Maintenance	1
2. Production parameters	2
2.1 Model and specifications	2
2.2 Product dimensions	3
2.3 Electrical principle	3
3. Operation	4
3.1 Start-up preparation	4
3.2 Setting	4
3.3 Operation method	4
3.4 Use of external equipment	5
3.5 Shutdown operation	6
3.6 Oil replace	6
4. Common failures and troubleshooting methods	7
5. Others	8
5.1 Warranty terms	8
5.2 Packing list	8
5.3 Spare parts	9



■ 1.1 Installation

When the equipment is installed, you should select a location that is not accessible to The child or the person who is not operating the equipment. Therefore, the children are prohibited from using the equipment!

- It is forbidden to work in outdoor environment of humidity, rain and snow.
- It is forbidden to spray liquid on the equipment.
- The presence of flammable gases or flammable vapors is prohibited around the equipment.
- The equipment must be used in rugged, stable and flat ground.
- The power must be cut off before the equipment is transported, cleaned and moved.
- Rollover should be prevented when the equipment is moved to void leakage of the pump oil.
- Please note the safety symbols or notes pasted on the equipment.

■ 1.2 Risks

Do not contact the live parts when working. It may be fatal to contact with live parts!

- When the equipment is connected to the power, it must be compatible with the rated power, frequency and voltage of the equipment.
- Power outlet may be used to connect power of the equipment, but it must match the circuit breaker and leakage circuit breaker as well as earthing.
- It is prohibited from using a cable with defective or insufficient cross-section.

■ 1.3 Equipment

When the equipment is installed, you should select a location that is not accessible to The child or the person who is not operating the equipment. Therefore, the children are prohibited from using the equipment!

- The oil level of vacuum is sufficient when leaving the factory, but the oil level of the vacuum pump should be inspected regularly.
- If any damage or leakage is found before starting the equipment, it should not start running.



2. Product dimensions

- To keep the heating wire clean, because the service life of the heating wire will be shortened due to pollution. And Teflon paint cloth should be wiped clean with a damp cloth constantly.
- The package may be damaged with long vacuum time. So correct vacuum time should be set according to the package property.
- When packing the liquid, it should ensure that there is no leakage in the process of packaging, or it may lead to damage of the vacuum pump.

■ 1.4 Maintenance

- Only the people who know or are familiar with the performance of the equipment or professional maintenance personnel may conduct the maintenance.
- It should be ensured that the equipment is still and its power is cut off with cover down when maintained.
- Only the original accessories can be used when maintained. Some standard parts are allowed (e.g. screws, etc.).
- It is forbidden to use acid, alkali or other corrosive solutions to wipe the vacuum cover glass surface and vacuum chamber fuselage.
- It is forbidden to use sharp hard objects to scrape or knock on the glass surface of vacuum cover.

2. Product parameters

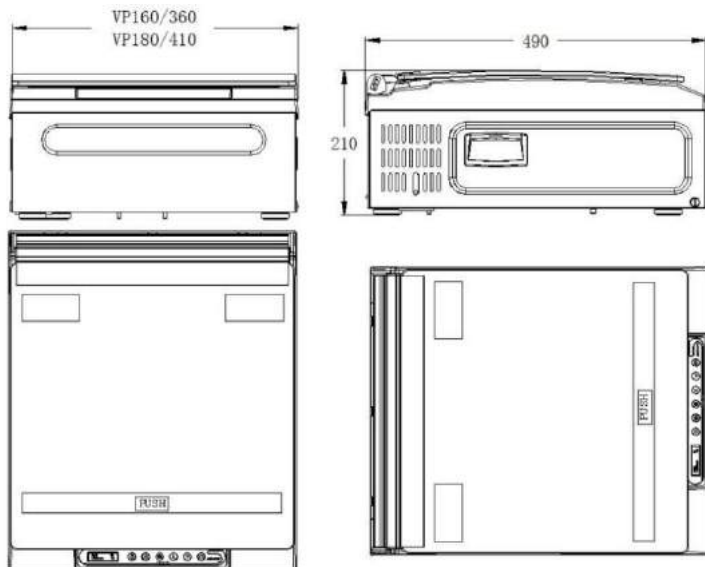
■ 2.1 Product parameters

type	VP 160	VP 180
Voltage	220V/50HZ	
Power	0.25KW	
Gas extraction rate	4m ³ /h ≥ -0.09Mpa	
Vacuum oil	-5-10°C- ISOVG 32	10-40°C-ISOVG 100
Net weight	≈20KG	≈24KG
Vacuum chamber size	305X300X110mm	355X300X110mm
Vacuum chamber volume	≈7L	≈9L
Sealing dimension	260X6mm	310X6mm
Spacer dimension	260X180X20mm	310X180X20mm
Overall dimension	360X490X210mm	410X490X210mm

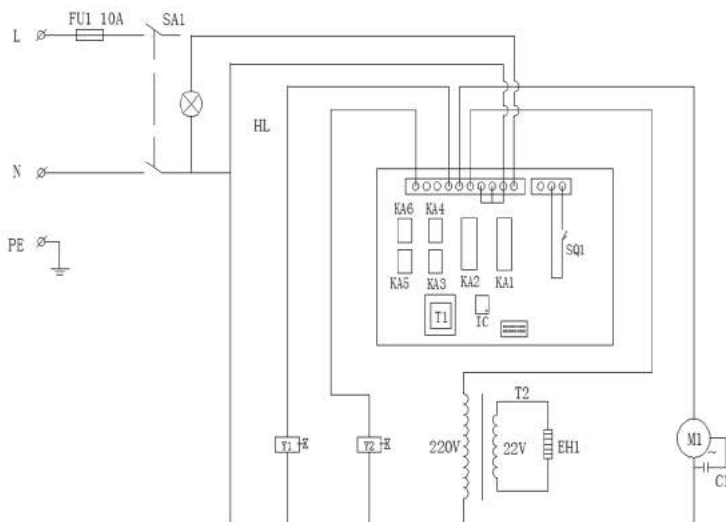
2、 Product dimensions



■ 2.2 Product dimensions



■ 2.3 Electrical principle





3.1 Start-up preparation



The following actions must be taken before test!

Note: if the pump has no oil before operation, it may cause engine damage!

3.1.1 Location selection

- The equipment must be installed in a solid and flat face.
- The ground should be non-slip to minimize the risks associated with the movement of equipment.
- This machine cannot be installed in hazardous areas.
- Please refer to 1.1 for other installation instructions.

3.1.2. Oil level examination

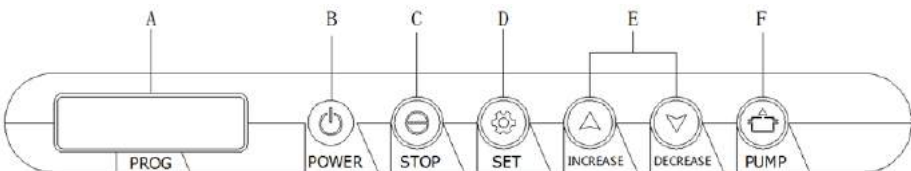
- If necessary, please turn off the power.
- The flip fuselage must be fixed to prevent the fuselage from accidentally falling down.
- To check the oil level position of the vacuum pump. The oil level is correct in the 2-3/4 position of the endoscope. (the excessive oil must be discharged through the drain hole).
- To add appropriate vacuum oil (ISO VG32 or ISO VG100), which depending on operating temperature). Please refer to 3.6 for oil change.

3.2 Setting



The incorrect setting methods may affect the performance of the machine or the effect of the package.

3.2.1 Control panel



- A program and work status display.
- B Power button, note: This button only opens and closes power supply of the control panel, not cut off the total power supply of the equipment.
- C Stop button, to press it for return when setting, and press it for stop while working.
- D Setting button, to set all the functional parameters and confirm button.
- E Page up/down and replace the value.
- F Start up button for vacuum pump.



3.2.2 Setting methods

- Press setting button for standby, press page up/down to select program film stall P0-P9, and press the setting button again to enter work parameter settings.
- 1/4 vacuum time setting: press page up/down button to set the time of 0-99S. And press the setting button to save it and enter into next step.
- 2/4 charging time setting: press page up/down button to set the time of 0-9.9S. And press the setting button to save it and enter into next step.
- 3/4 sealing time setting: press page up/down button to set the time of 0-3.0S. And press the setting button to save it and enter into next step.
- 4/4 cooling time setting: press page up/down button to set the time of 2-9.9S. And press the setting button to save it and return.
- Set the time for 1-4 steps according to the principle from low to high.
- Press setting button for 3S for standby, to enter the functional setting.
- Pressure calibration: press page up/down button to calibrate the pressure. And press the setting button to save it and enter into next step.
- Screen protection: press page up/down button to turn on the standby display. And press the setting button and enter into next step.
- Button sound: press page up/down button to turn off button sound. And press the setting button to save it and enter into next step.
- Language selection: press the page up/down button to select language. And press the setting button to save it and return.
- Press stop button when setting, and return to standby display.

3.3 Operation methods

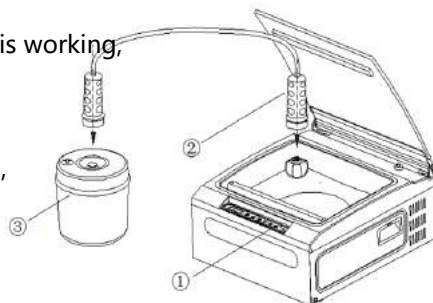
Incorrect or improper methods of operation may affect the effect of package.

- Turn on the power switch, select the program stall and set the time parameters. See 3.2.2.
- Select packing bags with appropriate size and material, put into the packaging, then put the package into the vacuum chamber flatly. Attention should be taken when packing liquids.
- Put the sealing position of the packing bags on the sealing bar flatly, and press the vacuum cover to start working.
- After the equipment starts working in accordance with the per -set time, the upper cover bounces off and the work is completed.



3.4 Use of external equipment

- Select the program stall and set the time parameters.
- Open the upper cover, press the pump ① start button, the pump starts to work.
- A vacuum chamber suction nozzle is inserted at one end of the ② gas extraction device.
- The other end of the ② gas extraction device is inserted into the ③ fresh-keeping tank suction nozzle. When reaching the setting time, it will stop automatically.
- And the work is completed.
- When this function is used, only the pump is working, and other functions are turned off.



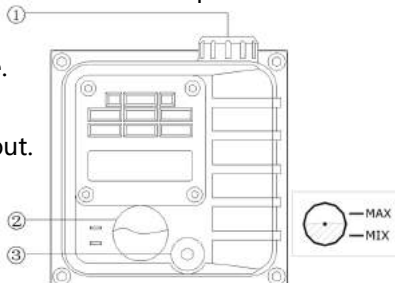
3.5 Shutdown operation

- Turn off power supply of the control panel,
- then turn off the equipment power.
- Please turn off the power when all the work is completed.
- If it is not used for a long time, unplug the power plug and place it in a cool and dry place.

3.6 Oil change

The quality of the oil will directly affect the performance and service life of the vacuum pump. It is recommended to work full 150 hours for oil change for the first time, later change oil after working for 500 hours. If the pump temperature rises, and the exhaust outlet has lampblack, oil filter should be replaced.

- Rotate ③ oil drain hole screw and take it out, thus the oil will be released through the oil hole.
- Install the ③ oil drain hole screw and fasten it.
- Rotate the ① refueling hole knob and take it out.
- Add the oil to the 2-3/4 position of the ② speculum through the ① refueling hole.
- Install the ① refueling hole knob and fasten it.



4. Common failures and troubleshooting methods

Fault	Reasons	troubleshooting methods
The equipment can't work	No connection or bad connection for the power supply cable	Check the connection of power supply cable
	Main power is not open or its switch is closed	Check the switch
	Fuse damaged	Check the fuse or replace
	Control panel damaged	Check the control panel or replace
	The starting switch is not contacted	Adjust the switch to make it contact
No vacuum or low degree of vacuum	Oil level of the vacuum pump is too low	Add vacuum oil to proper location
	The ambient temperature is too low, and the vacuum oil is frozen	Replace the vacuum oil with appropriate viscosity
	The vacuum pump is damaged	Replace vacuum pump
	Leakage of vacuum pump and connecting pipes	Check pumps, connectors, connecting pipes or replace
	Leakage of solenoid valve	Check solenoid valve connector or replace solenoid valve
	The setting working time of vacuum pump is too low	Increase working time for pump properly
	Pressure display inaccurate	Set pressure calibration the menu
	Vacuum chamber seal seam is not good or damaged	Check or replace the seals
Sealing can't be done	Heat seal temperature setting is too low	Increase heat seal time appropriately
	Bad contact or damage caused by sealing transformer	Check the transformer wire or replace
	The sealing heating wire is damaged or broken	Check electric wire or replace
	Bad contact of sealing power conductor	Check the conductors or replace
	Seal parts are not raised	Replace airbag solenoid valve
Bad effect of sealing	Heat seal temperature setting is too low or too high	Reduce or increase heat seal time appropriately
	Foreign substances on the surface of the seals	Wipe and clean foreign substances in the seals
	Serious air leakage, heating blocks fit loosely	Check pumps, connectors, connecting pipes or replace
	Electric wire deformation or folding	Check electric wire or replace
	Teflon paint cloth damaged	Replace Teflon paint cloth
Bad effect of packing or air leakage	Vacuum pump time is too low or too high	Increase or decrease pump working time appropriately
	Sealing is not bonded which causes air leakage	Adjust the sealing time
	Sharp hard objects, packing bags are too thin	Replace thicker packing bags
	Packing small objects with big packing bags	Replace the appropriate packing bag
No gas discharge after completion of work	Air discharge solenoid valve not open or damaged	Check air discharge solenoid valve or replace
	Control panel damaged	Check control panel or replace



5.1 Warranty terms

The warranty period for this equipment is at least 12 months after it is delivered to the end user. Unless otherwise agreed by both parties.

5.1.1 Spare parts guarantee


The warranty period for the spare parts is 6 months when it is delivered to the end user.

5.1.2 Warranty scope

- The equipment is delivered to the end user and the warranty will expires automatically after 12 months of normal use.
- The parts can be repaired or replaced for free of charge are the ones caused by maintenance, manufacturing or material defects of the manufacturer or authorized dealer.

5.1.3 The following factors are not covered by the warranty.

- Do not comply with the instructions in this manual, and improper use.
- Being operated under prohibited ambient conditions, and overload operation.
- Normal consumption or abrasion.
- To change the equipment without authorization and conduct maintenance by unauthorized personnel.
- Improper cleaning or maintenance, man-made damage to the equipment.

 In addition, all vulnerable parts are excluded from warranty (e.g. washers, silicone strips, Teflon paint cloth, heating wire, vacuum Oil, standard parts, etc.). Small blemishes (scratches, discoloration) may occur, but they do not affect the performance and use of the equipment, therefore, they are not covered by the warranty.

5. Others

■ 5.2 Packing list

Name	Model and specifications	Quantity
Spacer	VP160 -260x180x20mm VP180 -310x180x20mm	2 blocks
Power supply cable	3X0.75	1 pcs
External gas extraction device	convention	1 set
Instruction manual	convention	1 copy

■ 5.2 Packing list

Heating wire	VP160 -350X6X0.15mm VP180 -400X6X0.15mm	1 article
Teflon Paint cloth	VP160 -260X60mm VP180 -310X60mm	1 sheet
Vacuum oil	200ml	1 bottle

前言

亲爱的用户，请在使用机器之前仔细阅读说明书，这对您正确使用机器和安全操作机器非常重要。这份说明书系统地描述了在操作机器过程中和维护设备时可能产生的危险。请您参考文中使用的以下符号。



安全警示

这个符号指示采取一些安全措施来消除设备故障，保护您的个人安全。



注意

这个符号表示使用者用到的设备基本信息和方法技术。

我们回顾了说明书的内容。而我们不能保证内容完全与错误实际情况相同。但是我们定期回顾信息，进行必要的校对和相应的更新。如果您查阅说明书之后对设备的性能或者操作有任何顾虑，请在使用机器之前联系我们或者经销商。



因未按照说明书内容进行安装和使用而导致的机器故障或者事故，我们不承担责任。这份说明书的所有版权归公司所有，严格禁止传播，复制以及其它侵权行为。为防止任何侵权行为，本公司保留提出诉讼的权利。



采取措施防止搬运过程中设备损坏。请核查运送的设备是否与联系和要求的一致，如果运送的物品不完整或者有损坏，请通知经销商。



1.安全	1
1.1 安装	1
1.2 风险	1
1.3 设备	1
1.4 维护	1
2.产品参数	2
2.1 型号和明细	2
2.2 产品规格	3
2.3 工作原理	3
3.操作	4
3.1 启动准备	4
3.2 设置	4
3.3 操作方法	4
3.4 外界设备的使用	5
3.5 关闭操作	6
3.6 更换油	6
4.常见故障及故障处理方法	7
5.其它	8
5.1 保用单条款	8
5.2 包装清单	8
5.3 机器备件	9



1、安全



1.1 安装



当安装机器时，应选择一个儿童或者非设备操作人员可以接近的地方的，这样，儿童禁止使用设备。

- 禁止在户外潮湿和雨雪的环境里使用机器。
- 禁止将液体溅在机器上。
- 禁止机器周围存放易燃气体或者易燃烟雾。
- 必须在有垫子的稳固的平地面上使用机器。
- 在运输，清洗和移动设备之前必须切断电源。
- 在移动设备时防止设备侧翻，避免泵油泄露。
- 请注意贴在设备上的安全符号或者注意事项。

1.2 风险



在机器工作时，不要连接零件。连接零件可能是致命的。

- 当设备连接电源时，它必须符合设备的额定功率，频率和电压。
- 可以使用电源插座连接设备的电源，但它必须匹配电路断路器和漏电断路器以及接地。
- 禁止使用截面缺陷或不足的电线。

1.3 设备

- 真空机的油位在出厂时很充足，但是真空泵的油位应该定期检查。
- 在启动设备之前如果发现任何损坏或者泄露，应该不要启动机器。
- 设备运行时必须有人看管！设备不用时必须断开电源。
- 保持电热线清洁，因为污染，电热线的使用寿命会缩短。而且聚四氟乙烯漆布应该不断用湿布清理干净。
- 长时间抽真空可能损坏包装。所以应该根据包装特性设置正确的抽真空时间。



2、产品参数

- 当包装液体时，包装过程中应该确保没有泄露，否则它会导致真空泵的损坏。

1.4 维护

- 只有知道或者熟悉设备性能的人员或者专业维修人员可以进行维护机器。
- 维修时，应该确保设备静止不动，电源断开，盖子盖好。
- 维修时，只能使用原装配件，一些标准的零件也允许使用（如：螺丝）
- 禁止使用酸，碱或者其它腐蚀性溶液擦拭真空机盖子的玻璃表面和真空室
- 禁止使用尖锐的硬物刮或者敲击真空机盖子的玻璃表面。

2. 产品参数

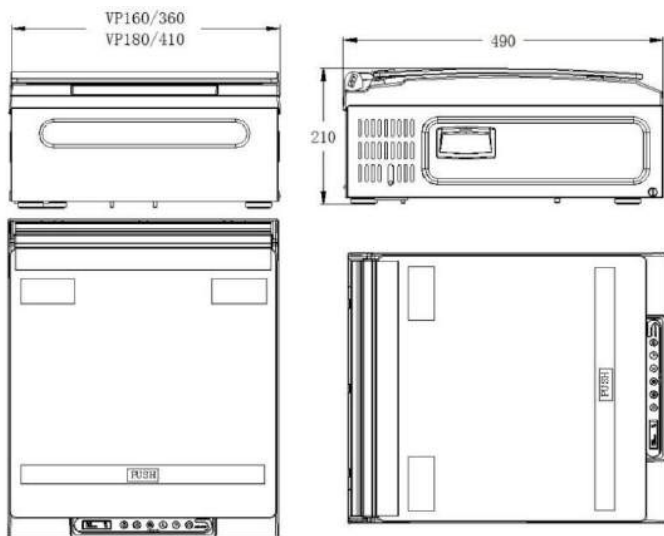
2.1 产品规格

型号	VP160	VP180
电压	220 伏/50 赫	
功率	0.25 千瓦	
抽气率	4 立方米/小时 $\geq -0.09\text{Mpa}$	
真空油	-5-10℃ - ISOVG 32	10-40℃ - ISOVG 100
净重	≈20 千克	≈24 千克
真空室尺寸	305X300X110 毫米	355X300X110 毫米
真空室容积	≈7 升	≈9 升
封口尺寸	260X6 毫米	310X6 毫米
垫板尺寸	260X180X20 毫米	310X180X20 毫米
整体尺寸	360X490X210 毫米	410X490X210 毫米

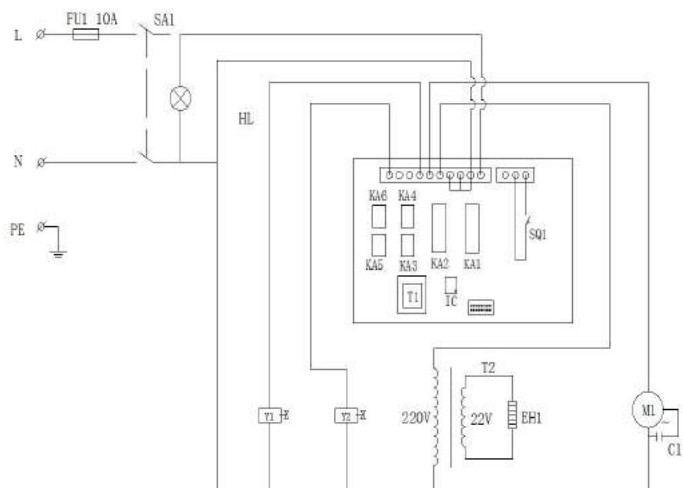
2、产品参数



2.2 产品尺寸



2.3 工作原理





3.1 启动准备



测试之前必须采取以下行动！

注意：操作之前如果泵没有油，它可能导致发动机损坏！

3.1.1 位置选择

- 设备必须安装在一个坚硬的平面上。
- 平面应该是防滑的，降低机器移动的风险。
- 机器不能安放在有危险的地方。
- 关于其它安装说明，请查阅 1.1。

3.1.2. 油位检查 Oil level examination

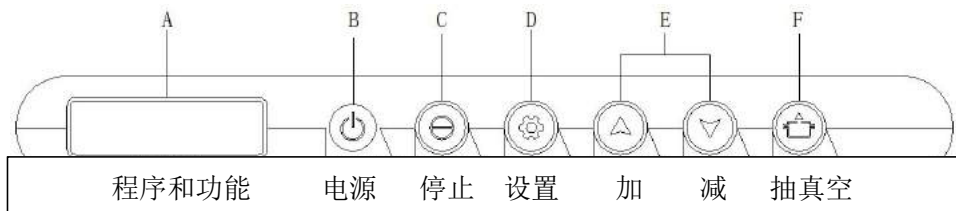
- 如果有必要，请关掉电源。
- 翻转机身必须固定好，防止机身意外滑落。
- 检查真空泵的油位。油位适合在内腔的 2-3/4 位置。（过多的油必须通过排油孔排出。）
- 添加合适的真空机的油 (ISO VG32 或者 ISO VG100)，这有操作温度决定。请查阅 3.6 换油说明。

3.2 设置



不正确的设置方法可能影响机器的性能或者包装效果。

3.2.1 控制面板



- **A** 程序功能和工作情形显示。 .
- **B** 电源按钮，注意：这个按钮只供开启和关闭控制面板的电源，不断掉设备的整体电源供应。
- **C** 停止按钮，进行设置时，按下它可以返回，正在工作时按下它可以停止工作。



- **D** 设置按钮，设置所有功能指示和确认按钮。
- **E** 上下翻页，更换数值。
- **F** 抽真空启动按钮。

3.2.2 设置方法

- 按设置按钮准备，按页码上/下键 选择程序 **0-9**，再次按设置按钮进入工作范围设置。
- **1/4** 抽真空时间设置：按页码上/下键 设置时间 **0-99** 秒。按设置按钮储存并进入下一步。
- **2/4** 充电时间设置：按页码上/下键 设置时间 **0-9.9** 秒。按设置按钮储存并进入下一步。
- **3/4** 封口时间设置：按页码上/下键 设置时间 **0-3.0** 秒。按设置按钮储存并进入下一步。
- **4/4** 冷却时间设置：按页码上/下键 设置时间 **2-9.9** 秒。按设置按钮储存并返回。

- 根据从低到高的原则设置 **1-4** 步的时间
- 按设置按钮 **3** 秒准备，进入功能设置。
- 压力校准：按页码上/下键 校准压力。按设置按钮储存并进入下一步。
- 屏幕保护：按页码上/下键 打开准备显示。按设置按钮储存并进入下一步。
- 声音按钮：按页码上/下键 关掉声音。按设置按钮储存并进入下一步。
- 语言选择：按页码上/下键 选择语言。按设置按钮储存并返回。
- 在设置时按停止按钮，并且返回准备显示。

3.3 Operation methods 操作方法



不正确或者不合适的操作方法可能影响包装效果。

- 打开电源开关，选择程序并设置时间范围，参见 **3.2.2**。
- 选择尺寸和材料合适的包装袋。放进需包装的物品，然后将将包装平放在真空机室。包装液体时需更加注意。
- 将包装袋的封口位置平放在封口条，按下真空盖开始封口工作。
- 设备开始工作与预设时间一致后，上盖会弹起，并且工作完成。



3、操作

3.4 使用外接设备

- 选择程序并且设置时间范围。
- 打开上盖，按抽真空 ① 开始按钮，开始抽真空工作。
- 真空室吸管安在② 抽气设备的一端。
- ② 抽气设备的一端安在 ③保鲜罐的管口。当达到设置时间时，它会自动停止。
- 工作完成。
- 当使用这一功能时，只能抽真空，并关掉其它功能。



3.5 停止操作

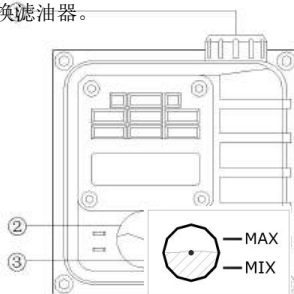
- 关掉控制面板的电源。
- 然后关掉设备的电源。
- 请在所有工作完成后关掉电源。
- 如果长时间不使用设备，拔掉电源插头，并且放置在凉爽干燥的地方。

3.6 更换油



油的质量将会直接影响真空机的性能和使用寿命。建议首次使用 150 小时后更换油。之后使用 500 小时后更换油。如果泵的温度升高，出油口变黑，应该更换滤油器。

- 旋转 ③ 滴油孔螺丝并且取出。这样油会通过油孔排出。
- 安装 ③ 滴油孔螺丝并且拧紧。
- 旋转 ①加油孔捏手并且取出。
- 通过①加油孔添，加油至② 容器的 2-3/4 位置。
- 安装①加油孔捏手并且拧紧。



4、常见故障及故障处理方法



故障	原因	故障处理方法
设备不能工作	电源线没连接或者接触不良	检查电源线连接
	主电源没开或者开关是关闭的	检查开关
	保险丝损坏了	检查保险丝或者更换
	控制面板损坏了	检查控制面板或者更换
	启动开关没连接	调整开关使它接触好
不能抽真空或者抽真空度低	真空泵油位太低	加真空泵油至合适的位置
	周围温度太低，真空机油冻结	更换合适黏度的真空机油
	真空泵损坏	更换真空泵
	真空泵或者连接管漏气	检查或者更换真空泵，连接器或者连接管
	螺线管阀漏气	检查或者更换螺线管阀
	抽真空时间设置太短。	适当增加抽真空时间
	压力显示有误	设置压力校准菜单
	真空室封口接口不好或者损坏	检查或者更换封口接口。
不能封口	加热封口温度设置太低	适当增加加热封口时间
	封口变压器导致的接触不良或者损坏	检查或者更换变压器电线
	封口电热线损坏或者断开	检查或者更换电线
	封口电源接触器接触不良	检查或者更换接触器
	封口零件没有升起	更换气袋螺线管阀
封口效果不好	加热封口温度设置太低或者太高	适当增加或者减少加热封口时间
	封口表面有异物	擦去封口表面的异物
	严重漏气，加热块松弛	检查或者更换泵，连接器或者连接管
	电线破损或折叠	检查或者更换电线
	聚四氟乙烯漆布损坏	替换聚四氟乙烯漆布
包装效果不好或者漏气	抽真空时间设置太低或者太高	适当增加或者减少工作时间
	封口未黏合导致漏气	调整封口时间
	坚硬物品，包装袋太薄	更换更厚的包装袋
	用大包装袋装小物品	更换合适的包装袋
工作完成后不排气	排气螺线管阀没打开或者损坏	检查或者更换排气螺线管阀
	控制面板损坏	检查或者更换控制面板

5、其他

5.1 保用单条款

这台设备的保用期是终端用户收到设备后至少 12 个月。双方都额外同意的除外。

5.1.1 备件保证

备件的保用期是终端用户收到设备后 6 个月。

5.1.2 保用单范围

- 终端用户收到设备后，正常使用 12 个月，保用单自动到期。
- 由于制造商或者授权的分销商提供的维修，生产或者材料缺陷导致的零件损坏，可以免费修理或者更换零件。

5.1.3 保用单不含以下因素。

- 不按说明书指导进行不当使用的。
- 在禁止条件下操作机器，和超负荷使用机器的。
- 未经授权改变设备，和由未经授权的人员实施维修的。
- 不合适的清洗或者维护，人为损坏设备的。



此外，所有易损零件都不在保用单范围之内。（如垫圈，硅胶条，聚四氟乙烯漆布，电热线，真空机油，普通的零件等等。）小的瑕疵（刮碰，变色）可能发生，但是它们不影响设备的性能和使用，因此，它们不在保用单范围之内。

5.2 包装单 Packing list

名字	型号和规格	数量
垫板	VP160-260x180x20 毫米 VP180-310x180x20 毫米	2 块
电源线	3X0.75	1 件
外接抽气设备	常规	1 套
使用说明书	常规	1 册

5、其他

5.3 备件

电热线	VP160-350X6X0.15 毫米 VP180-400X6X0.15 毫米	1 条
聚四氟乙烯漆布	VP160-260X60 毫米 VP180-310X60 毫米	1 片
真空机油	200 毫升	1 瓶



备件的型号和数量，顾客的所需物品和协议可能不同，这应该取决于实际情况。为了确保使用寿命和机器性能，请使用原装备件。

Thank You感谢

CREATIVECHEF®

◆ From Spain ◆

Thank you again for purchasing our vacuum packaging machine, wish you a happy using,
feel free to contact us if there are any questions in using.

再次感谢您购买我司的真空包装机，祝你使用愉快，在使用的过程中如有任何疑问
请及时与我司联系！

Manufacturer : ASTURSOURCING,S.L.

Address : Arroes de arriba,11 33314 Villaviciosa

Email : fsandoval@astursourcing.com
